



Lessons from NMP Call 2 (2008) Results

Andrea GENTILI
DG RTD G2 “New Generation of Products”
Andrea.Gentili@ec.europa.eu





NMP 2008 Evaluations..... all calls now evaluated

FP7-NMP-2008-ENERGY-1	(CPs)	Stages 1 & 2 evaluated
FP7-NMP-2008-LARGE-2	(CPs)	Stages 1 & 2 evaluated
FP7-NMP-2008-SMALL-2	(CPs)	Stages 1 & 2 evaluated
FP7-NMP-2008-SME-2	(CPs)	Stages 1 & 2 evaluated
FP7-NMP-2008-ENV-2	(CPs)	Single stage evaluated
FP7-NMP-2008-CSA-2	(CSAs)	Single stage evaluated
FP7-NMP-2008-EU-India-2	(CPs)	Single stage evaluated





Latest evaluation news

FP7-NMP-2008-LARGE-2 (CP-IPs)
FP7-NMP-2008-SME-2 (CP-TPs)

plus, recap on

FP7-NMP-2008-SMALL-2 (CP-FPs)



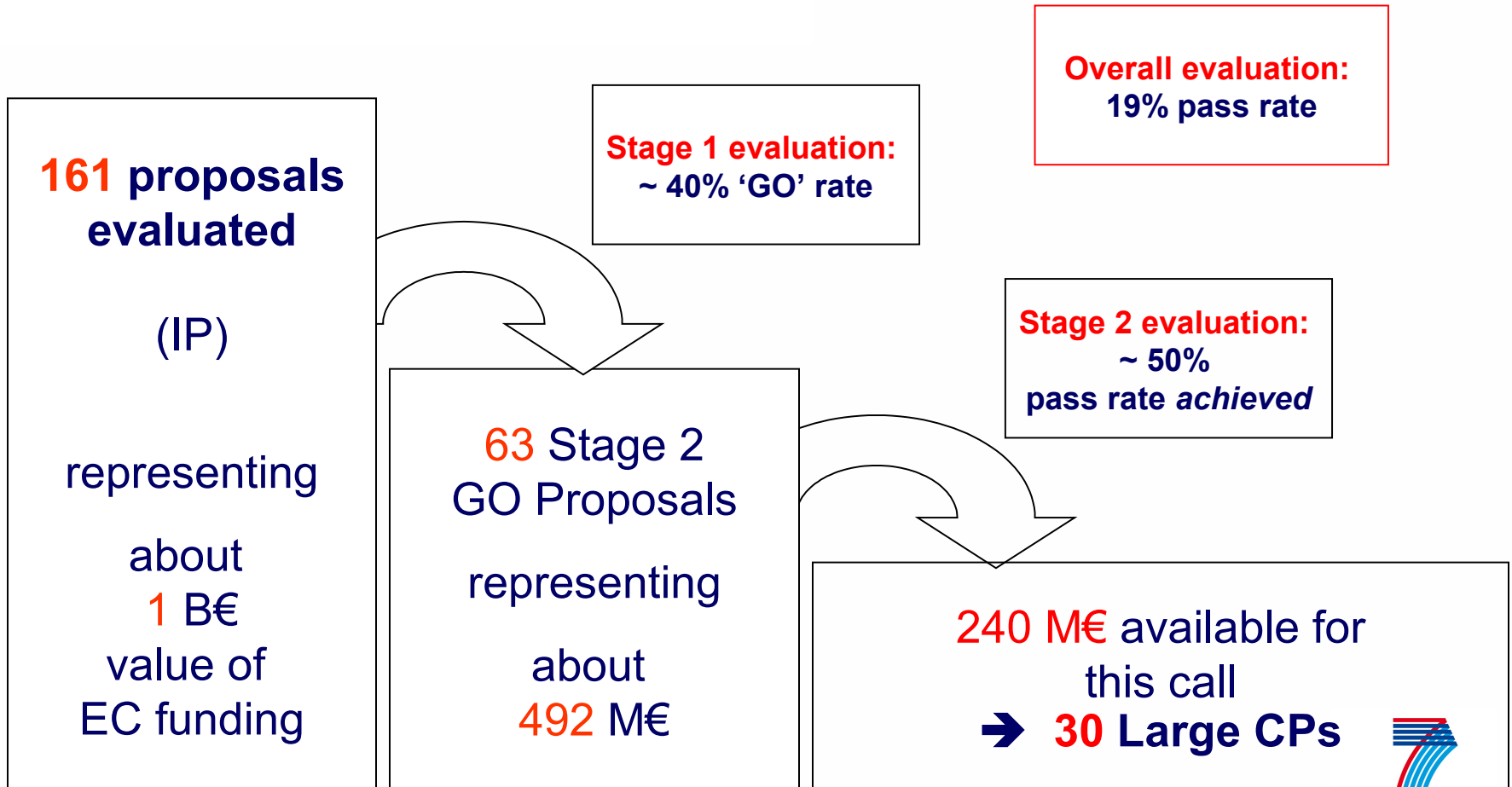


LARGE-2 (CP-IPs) Stage 2

- Indicative Budget: 240M€
- 13 Topics, 13 Panels
- Second stage evaluation of full proposals
- 3 standard criteria, non-standard thresholds:
 - S&T Excellence 4/5
 - Implementation 3/5
 - Impact 4/5
- 60 eligible proposals (1 ineligible, 1 withdrawn)
- 84 evaluators (min. 5 readings)
- Local evaluation, October 6 – 10
- Results sent November 7



2008 Evaluation of Large CPs





Response to the LARGE-2 Call

- 60 eligible proposals (62 GO proposals from Stage 1)
- Total requested funding 502M€
 - could fund about 1 in 2
- 24% Industrial co-ordinators,
37% Research and 30% Academic
- 45% Industrial participants,
18% Research and 32% Academic



Panels (LARGE-2)

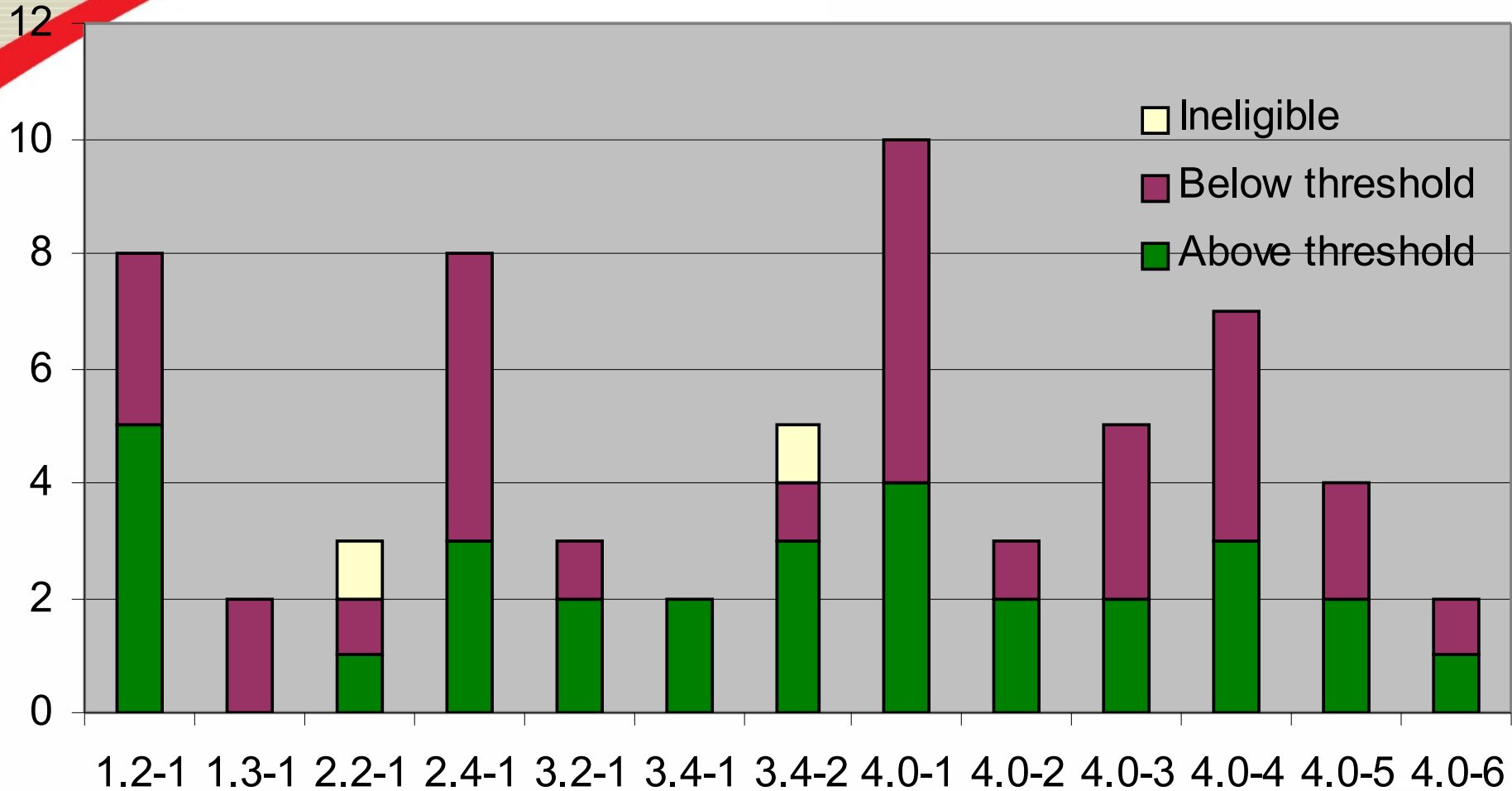
Panel		Topic	Proposals submitted	Proposals Retained	EU funding requested (m€)
01	1.2-1	Pilot Lines	8	5	40.294.691
02	1.3-1	Nano Risk	2	0	
03	2.2-1	Semiconductors	3	1	8.311.800
04	2.4-1	Hybrid Materials	8	3	18.936.740
05	3.2-1	Process intensification	3	2	36.403.795
06	3.4-1	Rapid design	2	2	13.200.000
07	3.4-2	Construction	5	3	19.384.441
08	4.0-1	Health	10	4	27782278
09	4.0-2	Liquid fuels	3	2	16.318.580
10	4.0-3	Nano applications	5	2	10.177.589
11	4.0-4	Lasers	7	3	23.249.506
12	4.0-5	Minerals	4	2	16 000 000
13	4.0-6	Bioproduction	2	1	7 727 381

~ 110 m€ for manufacturing topics



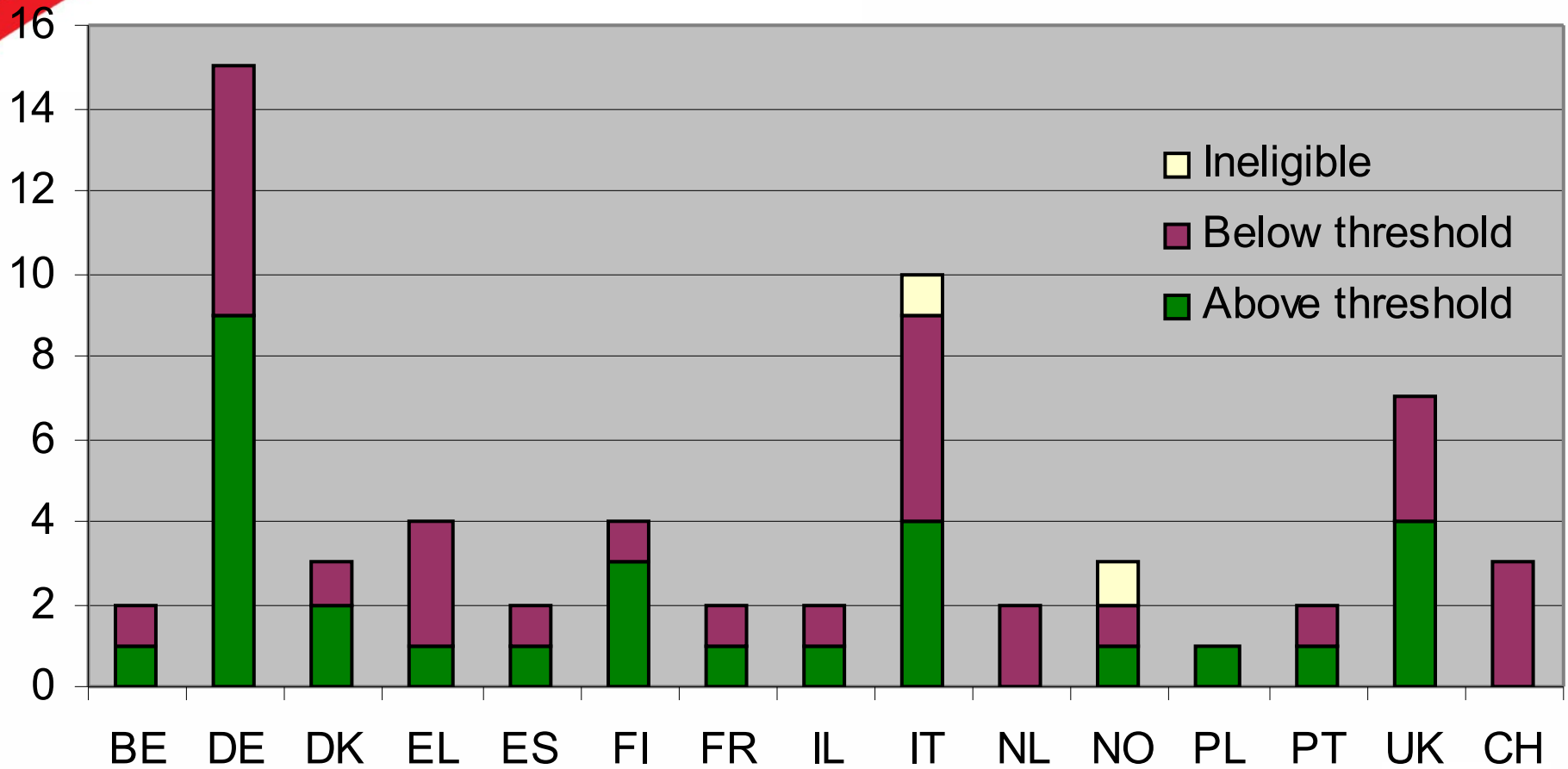


LARGE-2 Proposals



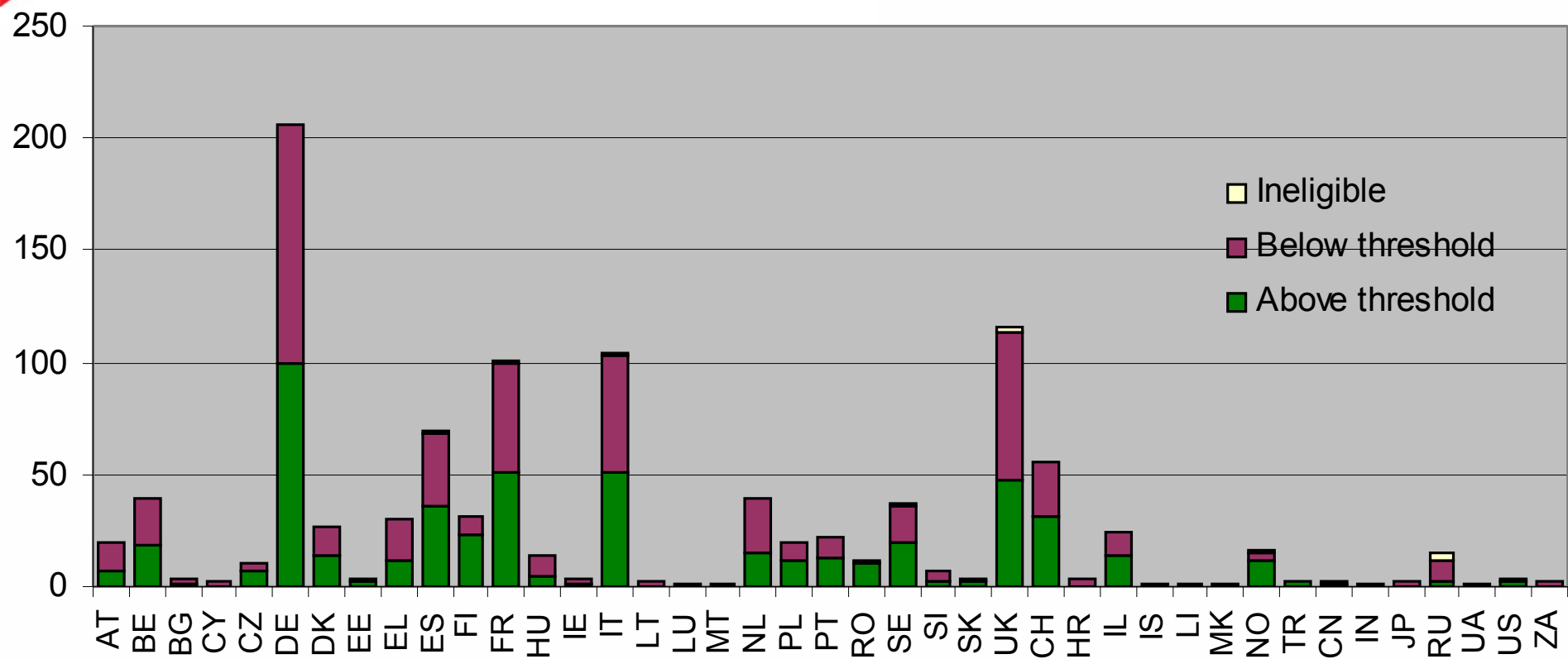


LARGE-2 Coordinators





LARGE-2 Participants



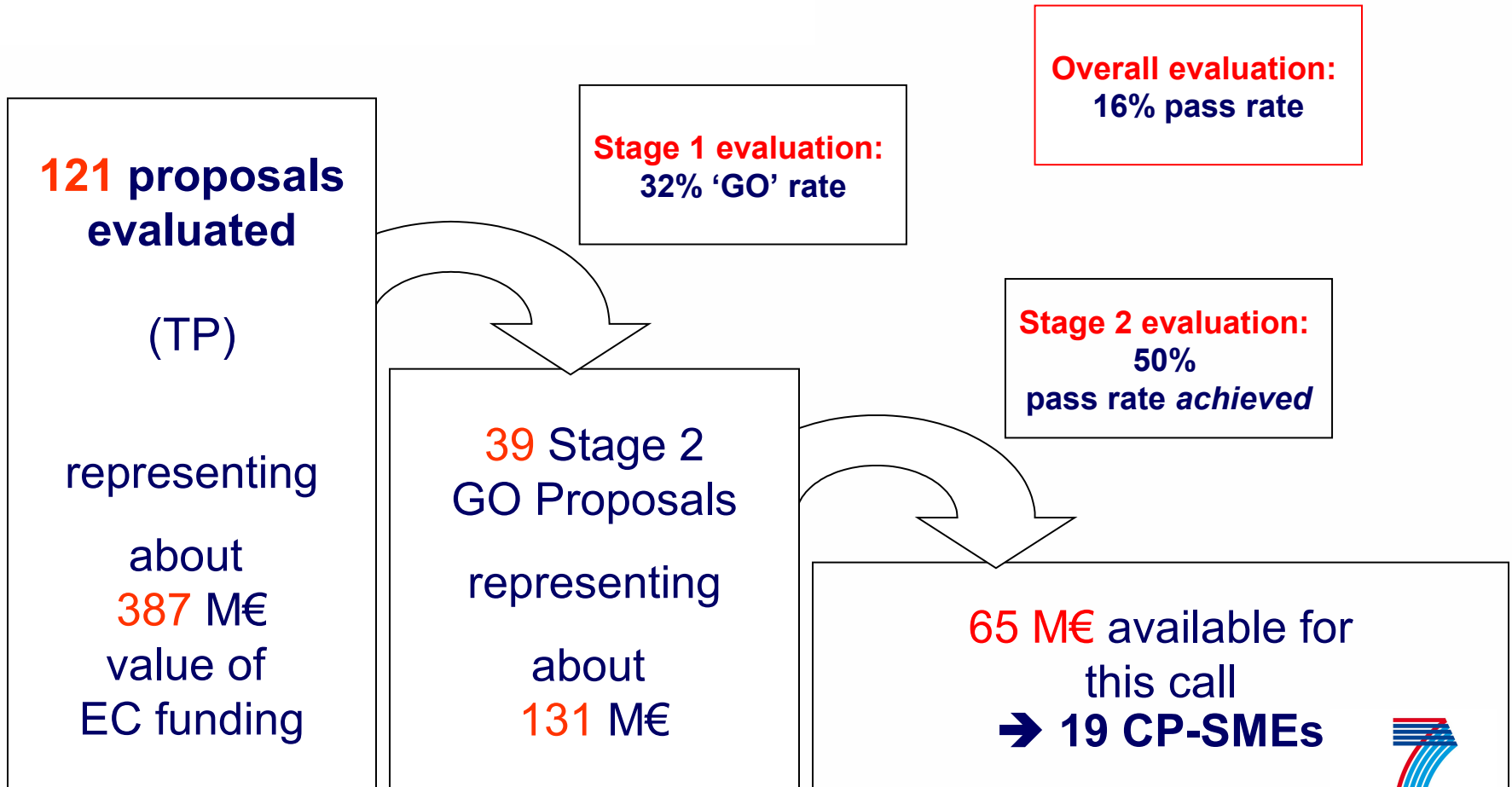


SME-2 (CP-TPs) Stage 2

- Indicative Budget: 65M€
- 5 Topics, 5 Panels
- Second stage evaluation of full proposals
- 3 standard criteria
- Non-standard thresholds:
 - S&T Excellence 4/5
 - Implementation 3/5
 - Impact 3/5
- 38 eligible proposals (0 ineligible)
- 35 evaluators (min. 5 readings)
- Local evaluation, October 6 – 10
- Results sent November 7



2008 Evaluation of CP-SMEs





Response to the SME-2 Call

- 38 eligible proposals (39 GO proposals from Stage 1)
- Total requested funding 133M€
 - could fund about 1 in 2
- 50% Research co-ordinators,
32% Industrial and 16% Academic
- 62% Research participants,
19% Industrial and 14% Academic



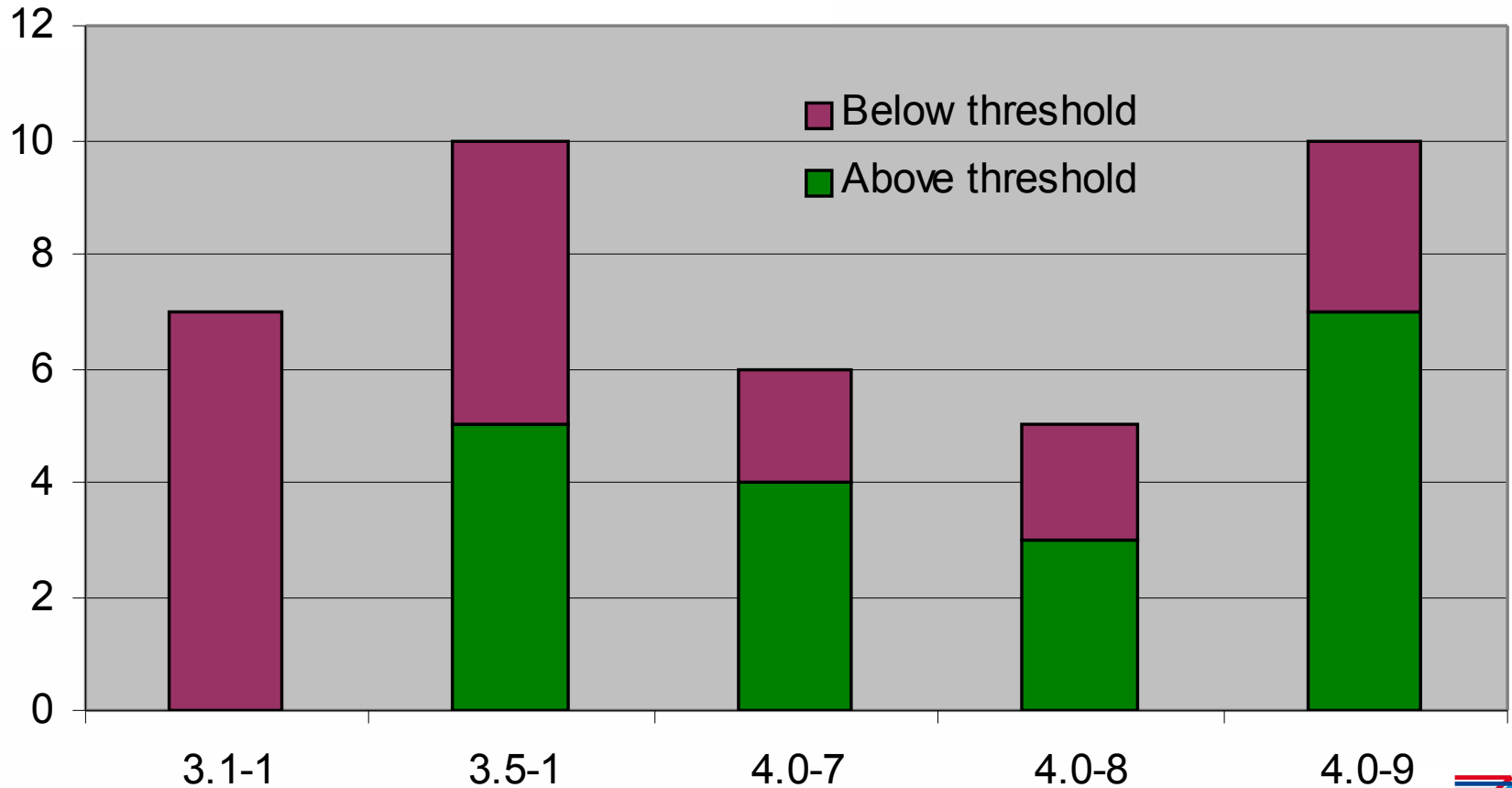
Panels (SME-2)

Panel		Topic	Proposals submitted	Proposals Retained	EU funding requested (m€)
01	3.1-1	Global market	7	0	
02	3.5-1	Micro-manufacturing	10	5	19.892.050
03	4.0-7	Consumer-centred	6	4	14.601.973
04	4.0-8	Smart materials	5	3	9.842.440
05	4.0-9	Protective equipment	10	7	21.663.342

~ 65 m€ for manufacturing topics

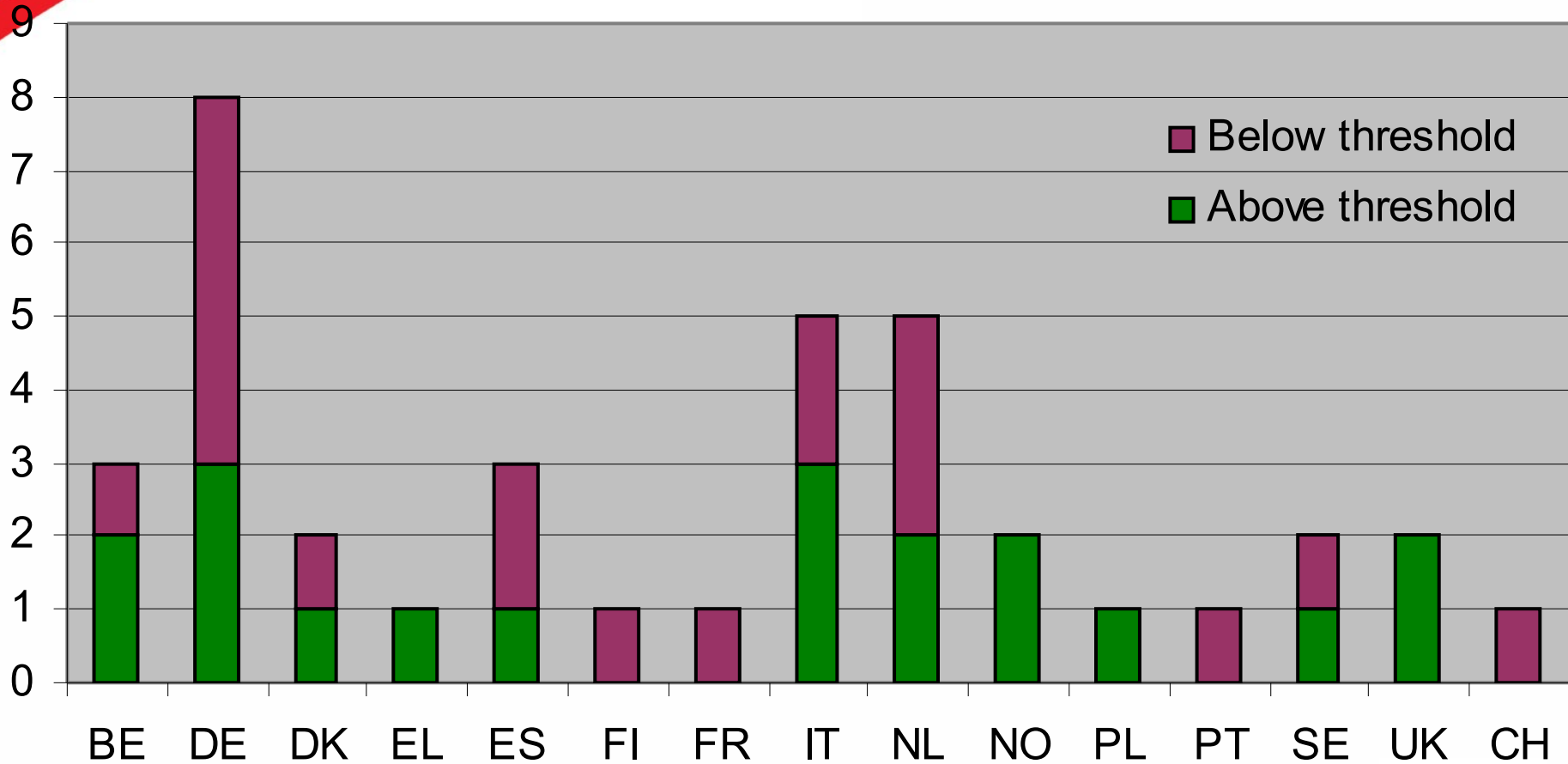


SME-2 Proposals



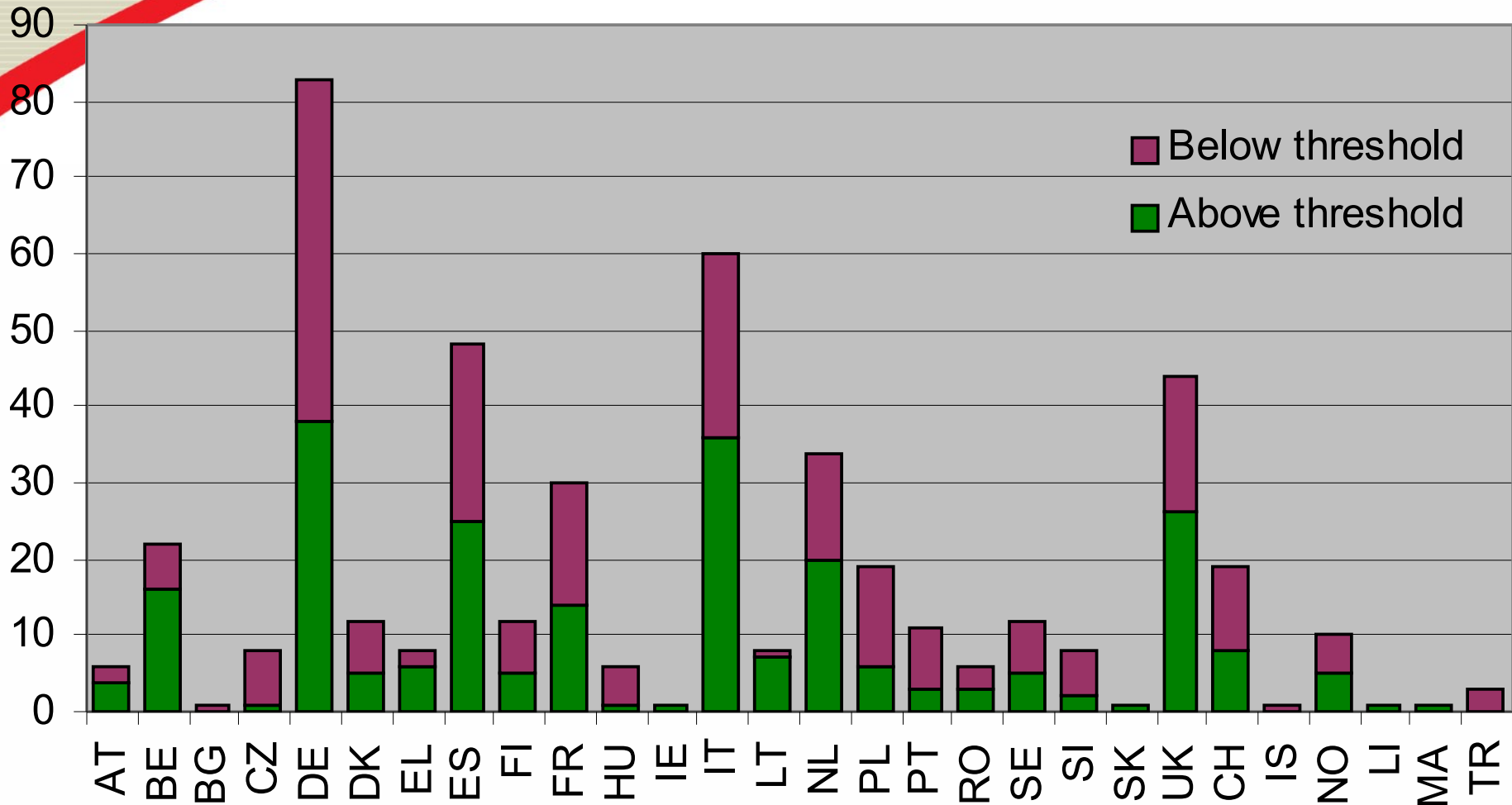


SME-2 Coordinators





SME-2 Participants





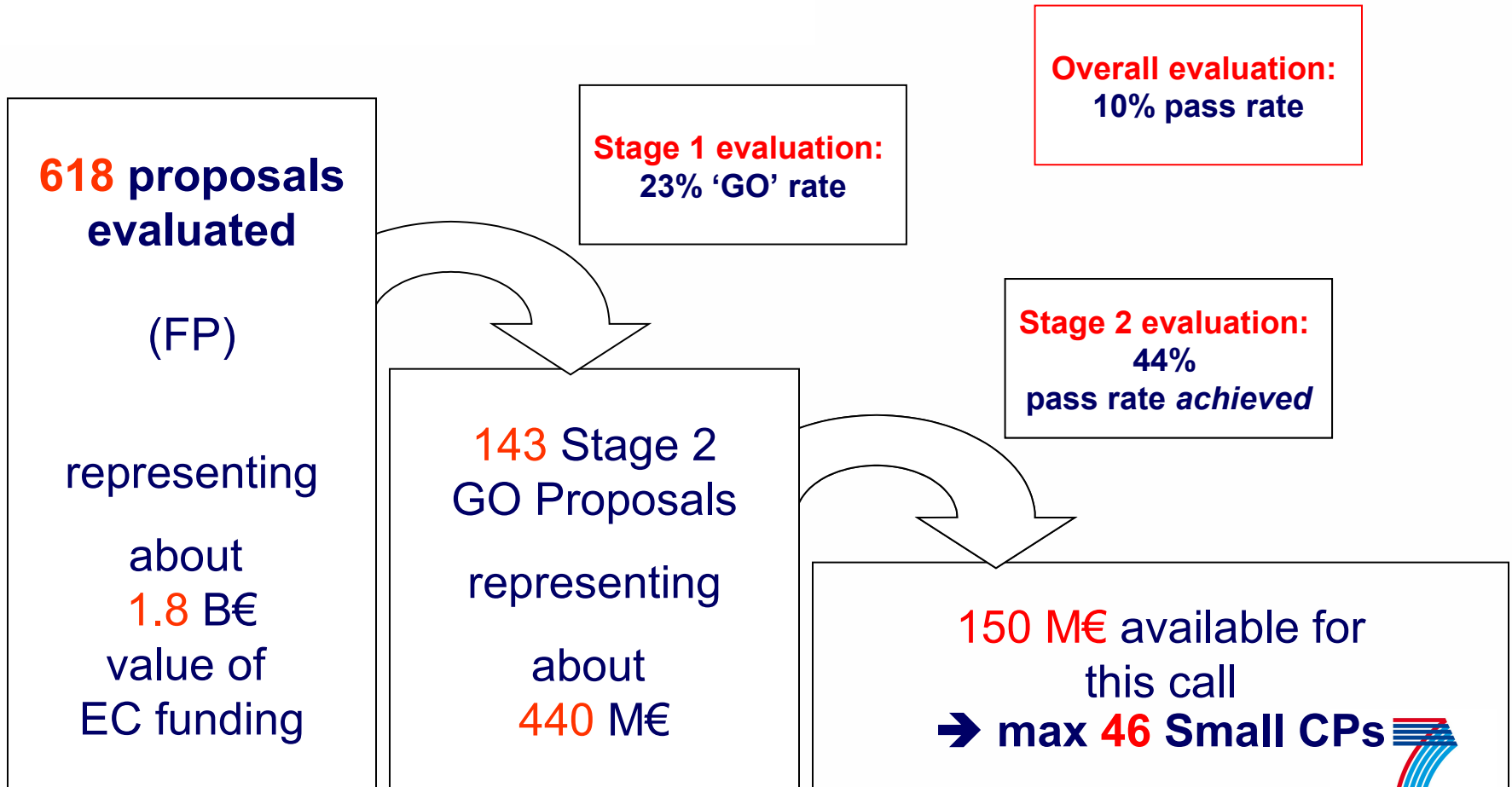
SMALL-2 (CP-FPs) Stage 2

- Indicative Budget: 150M€
- 12 Topics, 12 Panels
- Second stage evaluation of full proposals
- 3 standard criteria, non-standard thresholds:
 - S&T Excellence 4/5
 - Implementation 3/5
 - Impact 3/5
- 141 eligible proposals (1 ineligible)
- 75 evaluators (min. 3 readings)
- Remote / Local evaluation, September 15 – 26
- Results sent October 14





2008 Evaluation of Small CPs





Response to the SMALL-2 Call

- 141 eligible proposals (143 GO proposals from Stage 1)
- Total requested funding 466M€
 - could fund less than 1 in 3
- 44% Academic co-ordinators,
37% Research and 14% Industrial
- 40% Academic participants,
20% Research and 35% Industrial



Panels (SMALL-2)

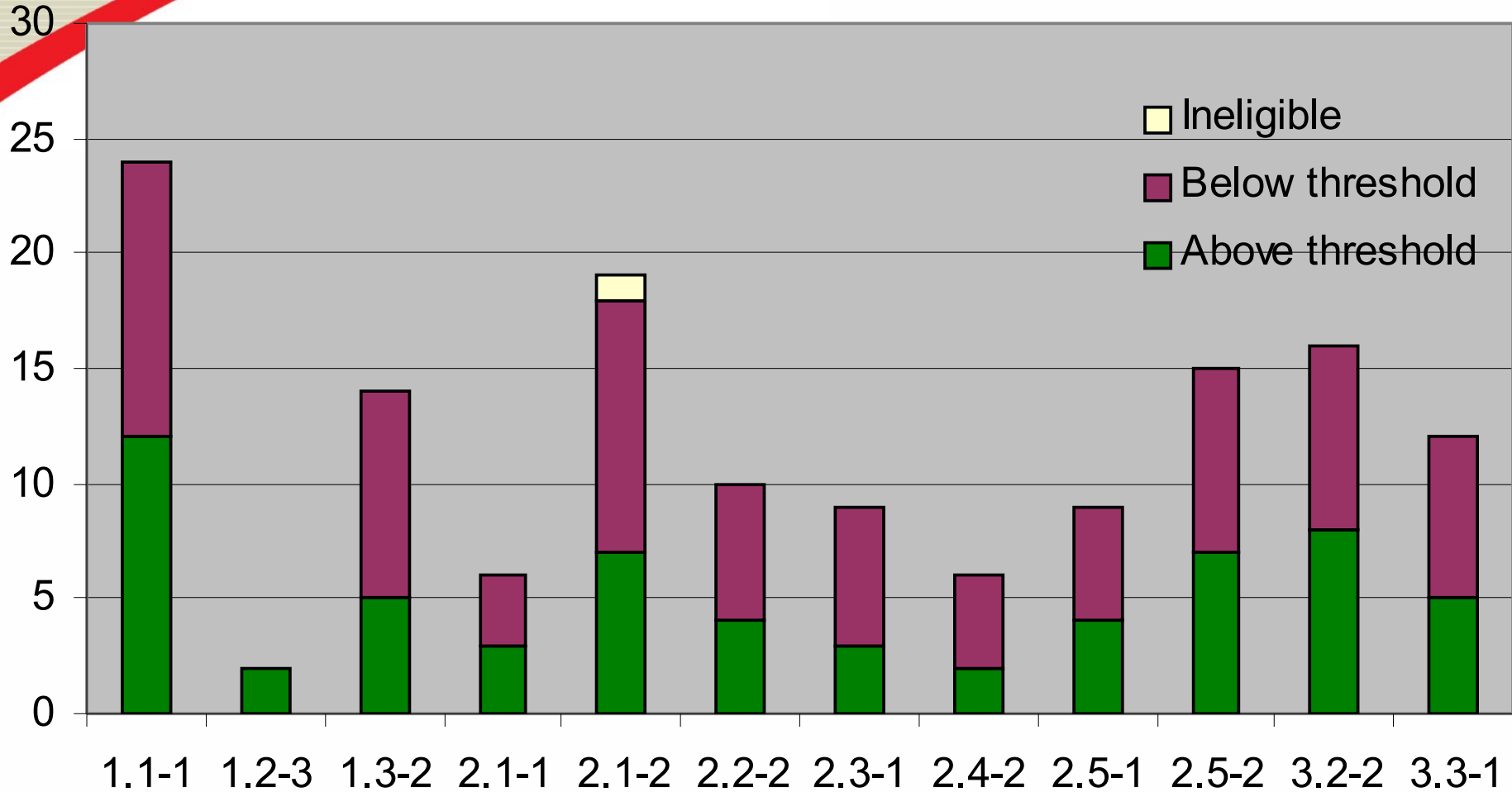
Panel		Topic	Proposals submitted	Proposals Retained	EU funding requested (m€)
01	1.1-1	Converging technologies	24	12	37.503.438
02	1.2-3	Nano combustion	2	2	5.810.328
03	1.3-2	Nanoparticles health impact	14	5	15.854.584
04	2.1-1	Nano-membranes	6	3	11.091.031
05	2.1-2	Nano-materials	18	7	19.226.530
06	2.2-2	Meta-materials	10	4	14.889.180
07	2.3-1	Implants	9	3	8.886.416
08	2.4-2	Films / tapes	6	2	7.354.265
09	2.5-1	Graded materials	9	4	13.026.202
10	2.5-2	Interface modelling	15	7	22.405.000
11	3.2-2	Self-learning systems	16	8	27.182.227
12	3.3-1	Supply chain	12	5	13.275.200

~ 40 m€ for manufacturing topics



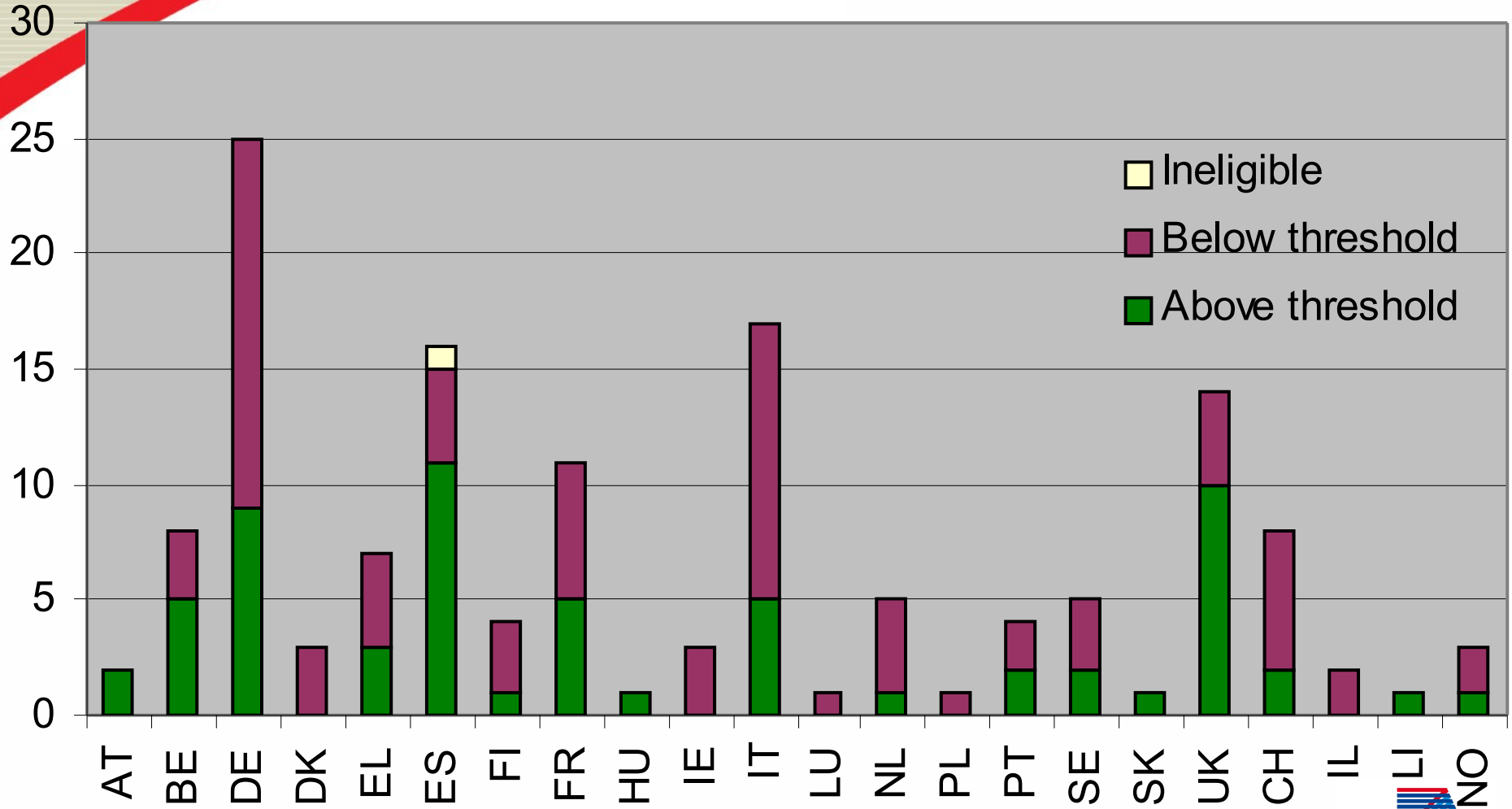


SMALL-2 Proposals



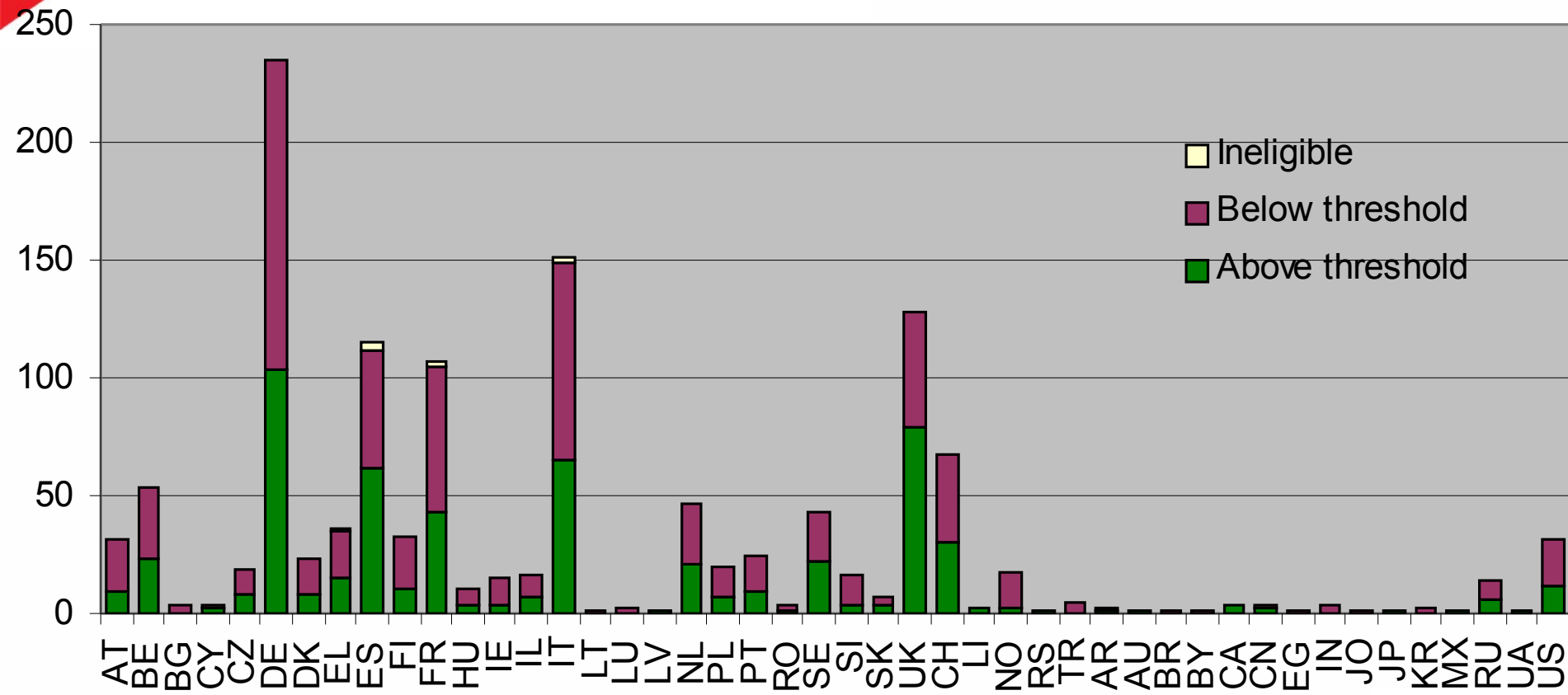


SMALL-2 Coordinators





SMALL-2 Participants





Stage 2 Summary

- 2 Stage process works as intended for LARGE and SME
- Failure rate at stage 2 too high for SMALL-2
- SMALL-2 reserve list
- Potential surplus budget for LARGE-2, SME-2
- Pilot Remote / Local very successful
- ISC launched for SMALL-2 (2008 budget)



2 Stage Summary

	<i>SMALL-2</i>	<i>LARGE-2</i>	<i>SME-2</i>
Budget	150 M€	240 M€	65 M€
Stage 1	616	161	121
GO	143	63	39
Stage 2	141	60	38
Above Threshold	62 (+16 reserve)	30	19
AT Requested	206 M€	245 M€	70 M€
AT Recommended	195 M€	229 M€	63 M€
Below Threshold	79	30	19
For Manufacturing topics (m€)	~40	~110	~63



NMP WP Establishment

Useful data from NMP Call 1 (2007) and 2 (2008)

- **Average number of partners for LargeCPs: 21**
- **Average EU funding requested from LargeCPs: 8.1 M€**
- **Average number of partners for SmallCPs: 9**
- **Average EU funding requested from SmallCPs: 3.1 M€**
- **Average number of partners for SME-CPs: 13**
- **Average EU funding requested from SME-CPs: 3.6 M€**



NMP WP Establishment

Lessons Learned First Calls

- **Meaning of open topic versus focused topic in terms of consequences on funding**
- **Participation – increase industrial participation**
- **Coverage – all topics covered, successful small projects not all finance**



EUROPEAN
COMMISSION

Community research



Thank you for your kind attention

Disclaimer

Aspects of these presentations interpret legal documents. Only these legal documents are legally binding

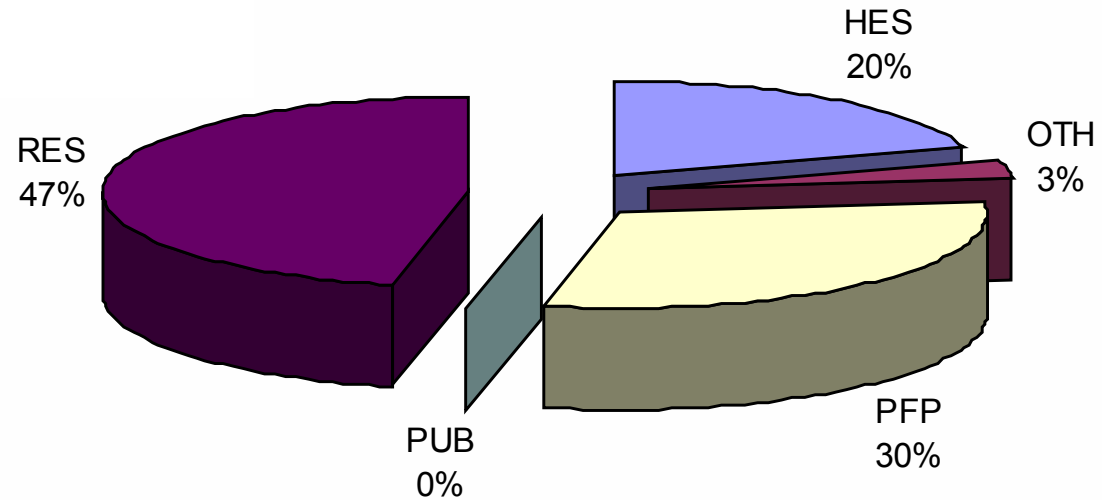
ToGEThe®
SINCE 1957



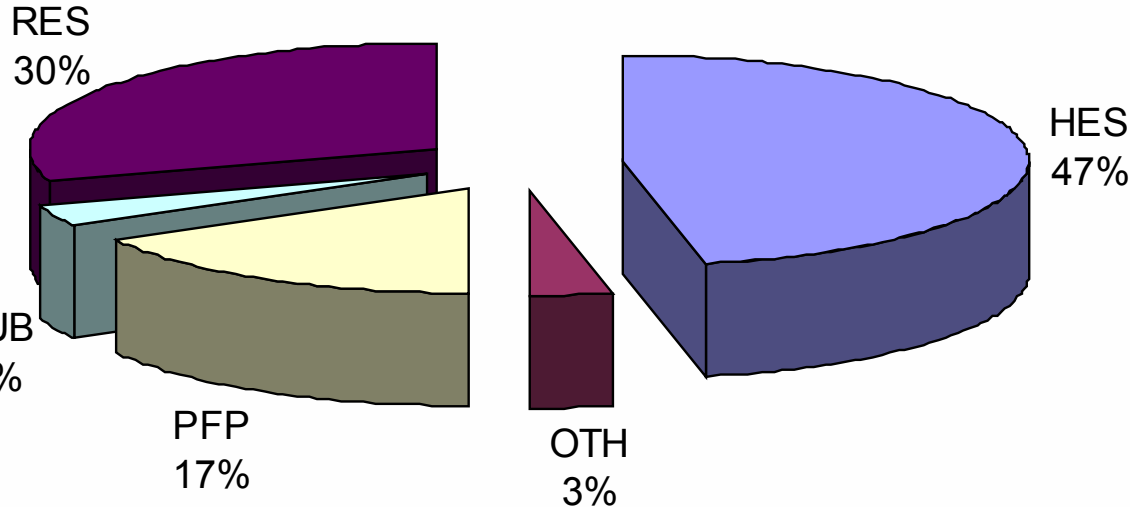


LARGE-2 Coordinators

Above threshold



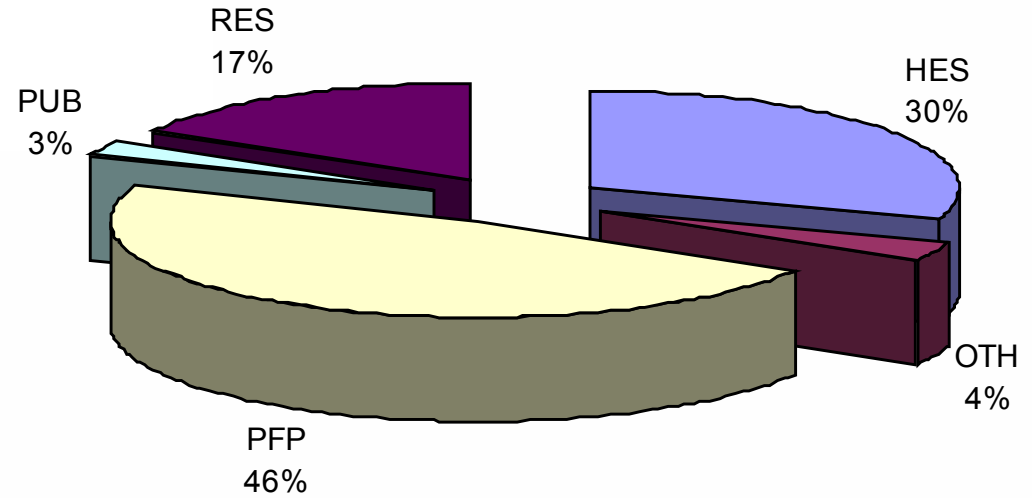
Below threshold



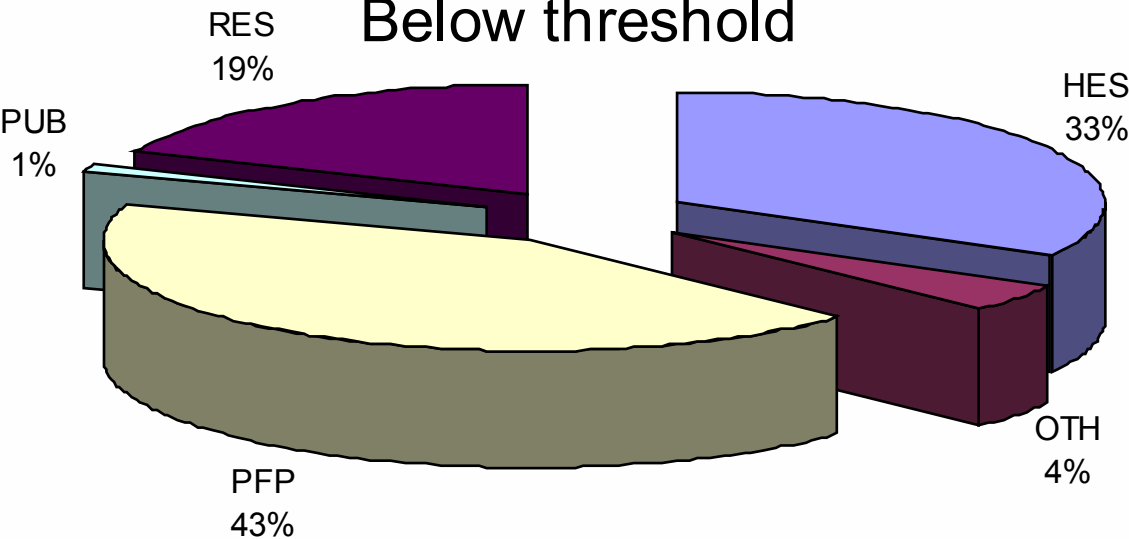


LARGE-2 Participants

Above threshold



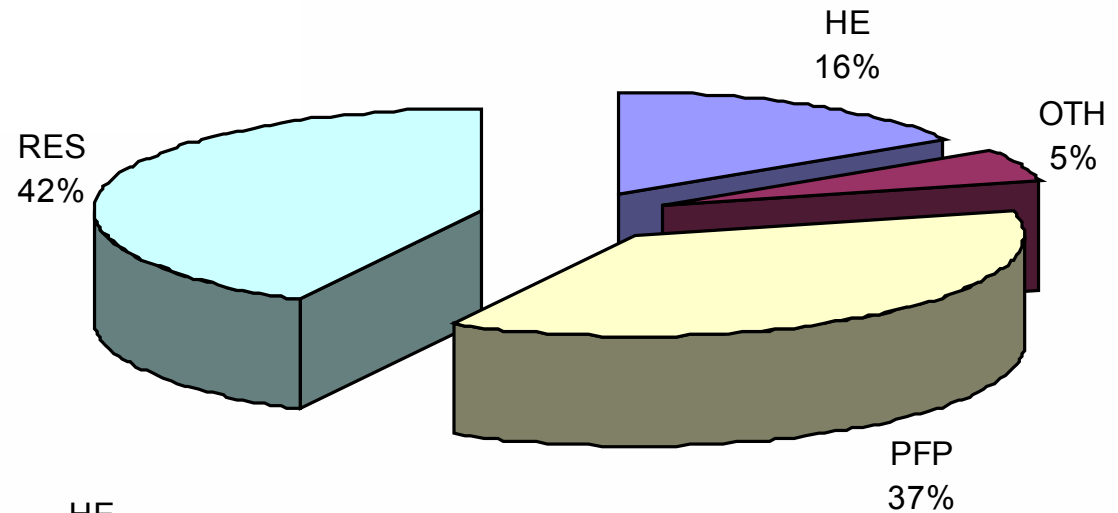
Below threshold



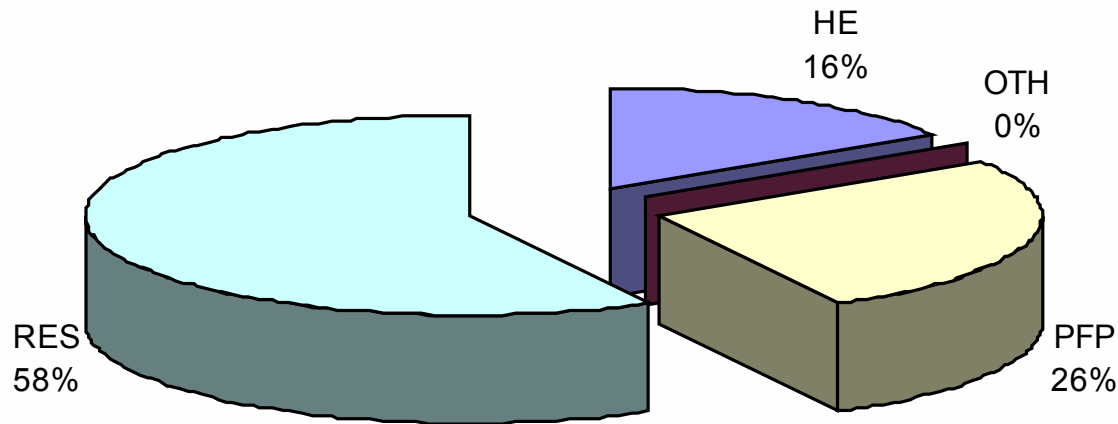


SME-2 Coordinators

Above threshold



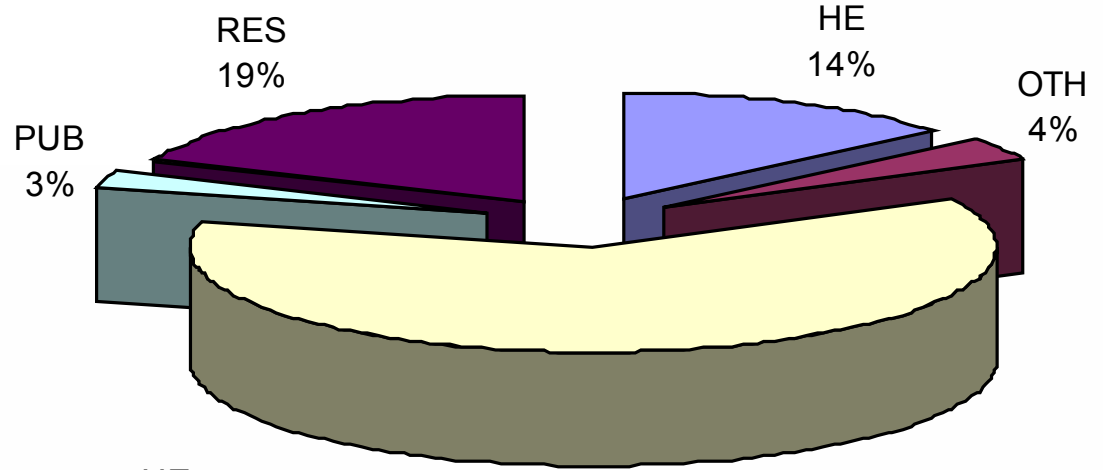
Below threshold



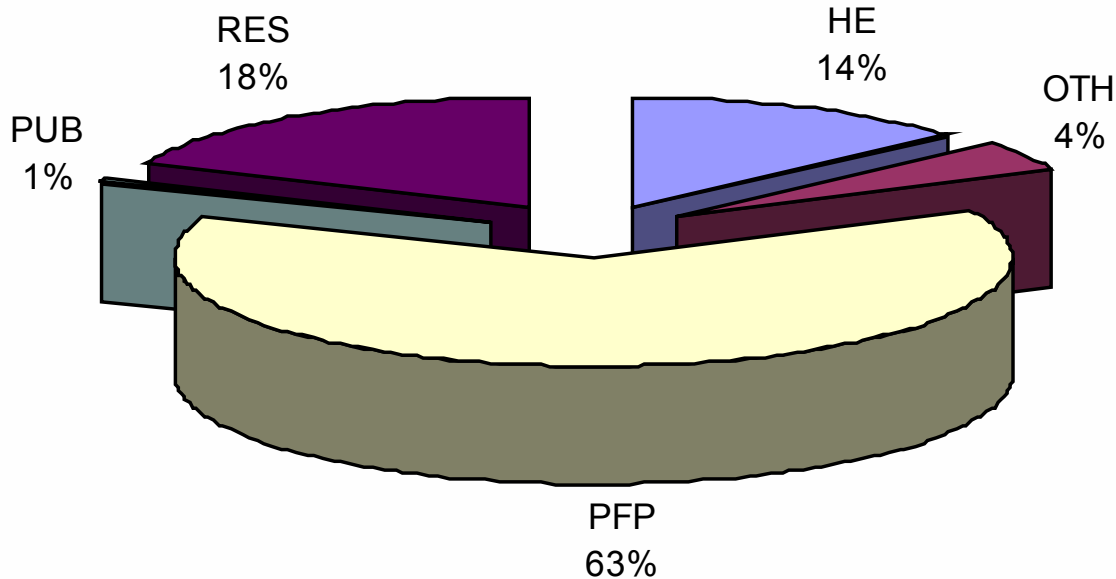


SME-2 Participants

Above threshold



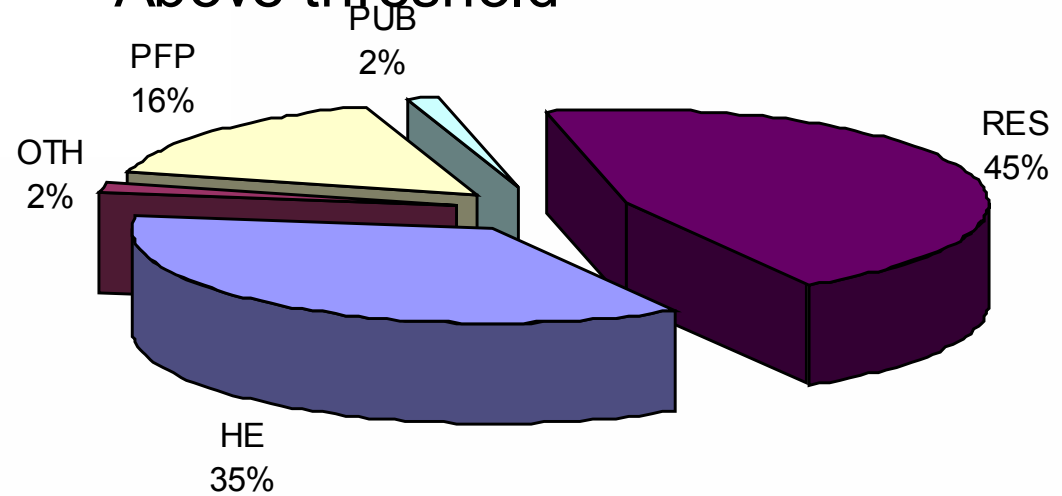
Below threshold



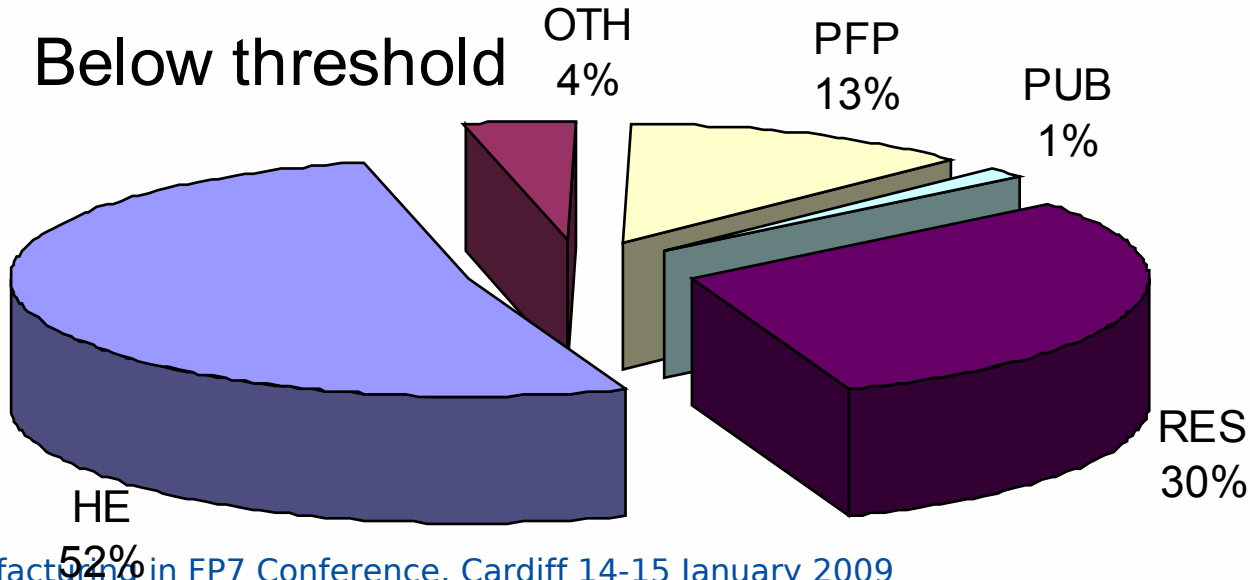


SMALL-2 Coordinators

Above threshold



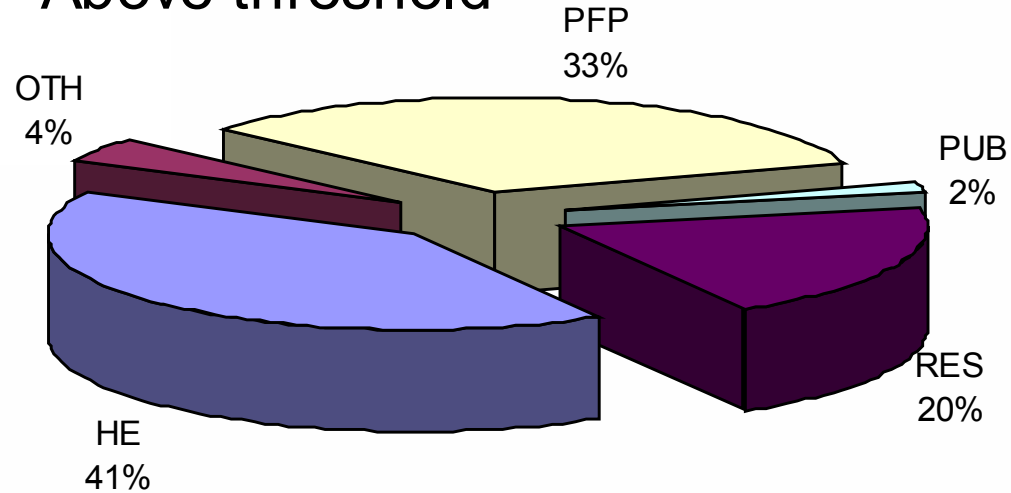
Below threshold





SMALL-2 Participants

Above threshold



Below threshold

